

rex



DRIVE
hydraulic 4x4 drive,
2 steering axles,
turning radius R = 2850 mm

REACH
24
meters

CAPACITY
20
tons



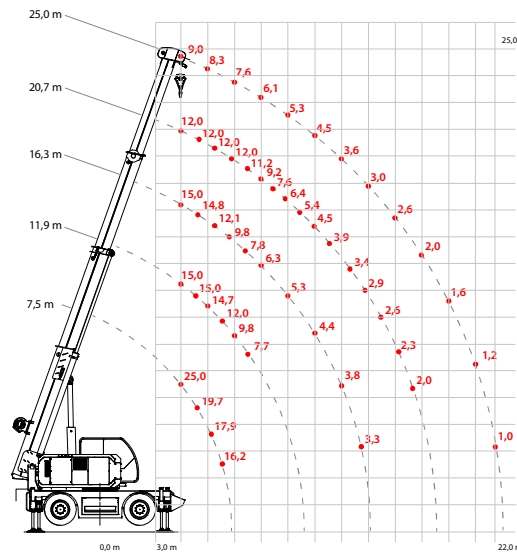
The crane has very good traction, capacity 20 tons and a four-section boom with a range of 24 m. Dimensions of the crane guarantee easy transport over long distances, its own hydraulic drive equipped with all steering wheels allows for easy movement around the terrain. Additionally, it can be equipped with a self-leveling, rotating personnel basket and an electromagnetic field sensor.

zbud.com.pl

WEIGHT	23 tons
CAPACITY	20 tons
REACH	24 m
LIFTING SPEED	48 - 12 m/min
ENGINE POWER	75 kW
MAX. WORKING PRESSURE	180 bar
LENGTH	5997 mm
WIDTH	2550 mm
HEIGHT	3242 mm
DRIVING SPEED	15 km/h
DRIVE SYSTEM	hydraulic 4x4 drive, 2 steering axles



REX20 - load diagram



ZAKŁAD BUDOWY URZĄDZEŃ
DŹWIGNICOWYCH
ZBUD Ltd.

ul. Żabińska 6
33-200 Dąbrowa Tarnowska

Centrala: 14 644 46 00
Marketing: 14 644 46 05

www.zbud.com.pl



ZBUD lifting equipment has been present on the Polish market since 1990. We know everything about material handling. We successfully provide our clients with effective solutions for many industries. Starting from simple manual driven hoists, through fully electric overhead, underslung and gantry cranes, on systems designed for work in potentially explosive atmospheres ending. In 1998, the company entered global markets, where it provides crane and service equipment for drilling platforms and ship rescue systems.

ZBUD is 100% family owned, which shapes our culture and is a solid foundation of our success and credibility.

We are proud to present the REX20 rough terrain crane.